



Algiers Ferry Terminal Renovation June Schematic Design Feedback Summary



Overview

Input on the Schematic Design was collected through:

- Individual stakeholder engagement
- 3 public input sessions:
 - Monday, June 17, 4pm – 6:30pm
Algiers Regional Library
 - Thursday, June 20, 11am – 12pm
VIRTUAL
 - Monday, June 24, 5:30pm – 6:30pm
VIRTUAL
- Online survey – accessed via website

Join us in person or virtually to provide feedback on the preliminary design

IN PERSON:

Monday, June 17 • 4 p.m. – 6:30 p.m.

Algiers Regional Library

(3014 Holiday Drive, New Orleans, LA 70131)

VIRTUAL:

Thursday, June 20 • 11 a.m. – 12 p.m.

OR

Monday, June 24 • 5:30 p.m. - 6:30 p.m.



norta.com/algiersterminal



Schematic Design Meetings - Participants

June 17th – 28 participants

June 20th – 23 participants

June 24th – 18 participants



Ferry Terminal Schematic Design Input Session

Presentation and materials covered:

- **What we heard from the Listening Sessions**
- **Schematic Design:**
 - **Site Circulation**
 - **Exterior & Preservation**
 - **Pedestrian Boarding**
 - **Interior**

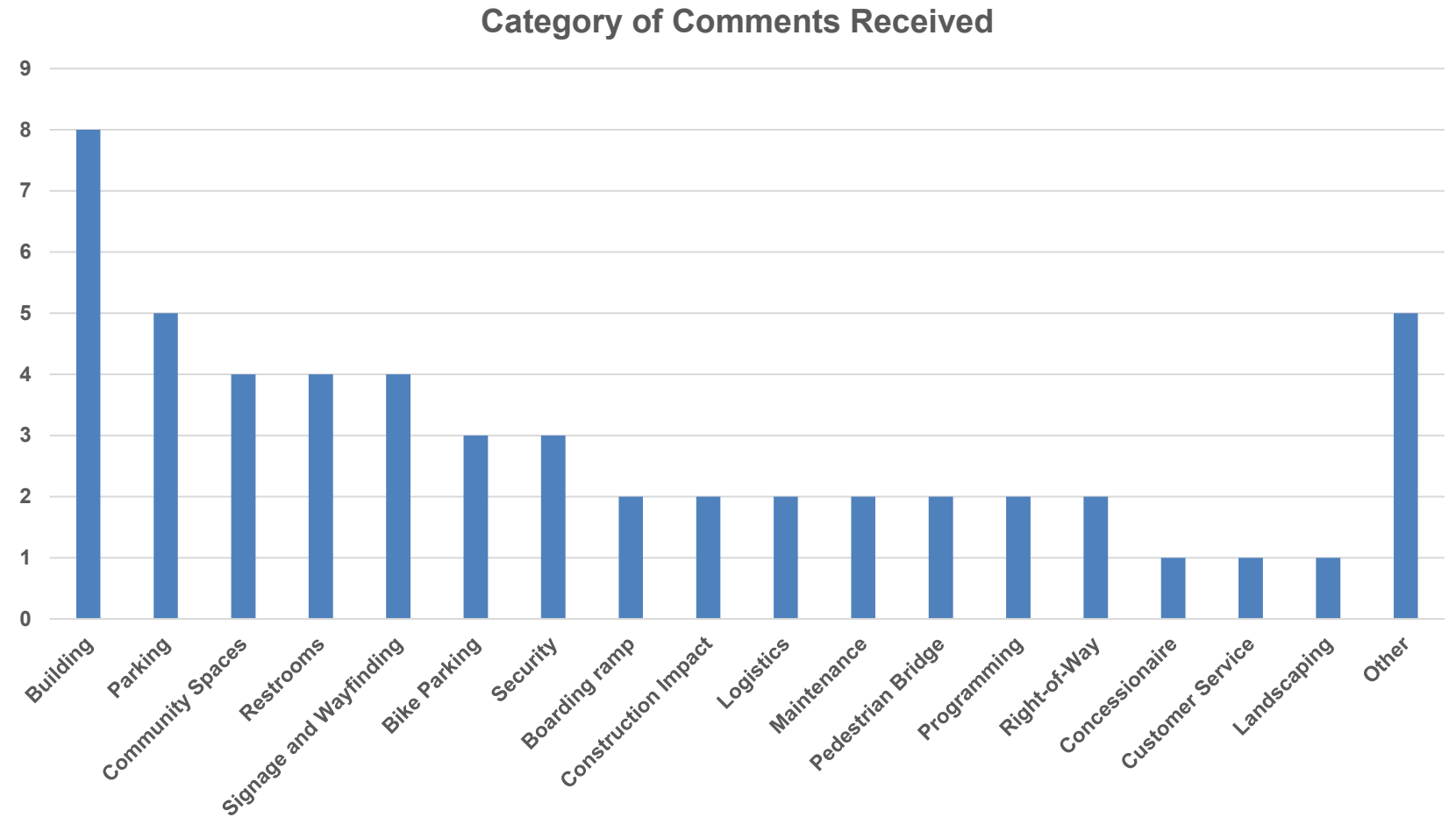




Schematic Design Input Sessions: Comments Received

Top Response Areas:

- Building design
- Parking
- Community Spaces
- Restrooms
- Signage/Wayfinding



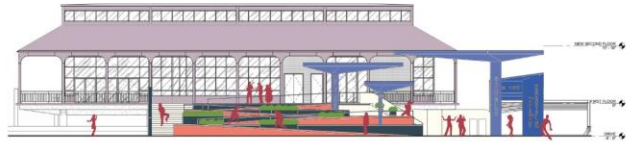
Schematic Design Input Sessions: Sample comments

ALGIERS FERRY TERMINAL RENOVATION

100 Morgan Street, New Orleans, LA, 70114



PEDESTRIAN BOARDING



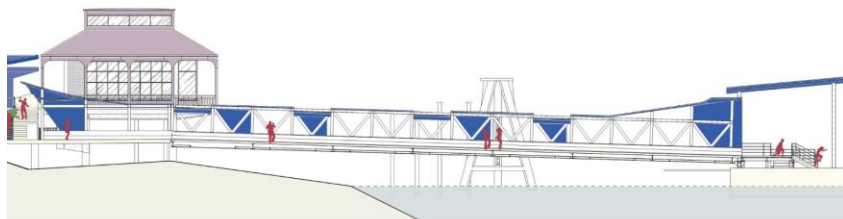
WEST ELEVATION

SCALE: 7/32" = 1'-0"



3D VIEW

NOT TO SCALE



CROSS SECTION - COVERED PEDESTRIAN FERRY BOARDING

SCALE: 7/32" = 1'-0"

Terminal should have a full time customer service person (not just 8am - 5pm) to answer questions from riders and guide tourists

Will the surface of the ferry ramp be modified?

Concerned about off-site perpendicular parking spaces for backing up might be tight

Like the idea of community spaces and concessionaire

Would like to use public plaza for farmers market new location

Real time arrival displays for the bus and the ferry inside the terminal

Would like to see more tree canopy planned, especially near the bike parking

Emphasize need for good signage along the river trail for cyclists to avoid conflicts with pedestrians





Ferry Terminal Online Survey

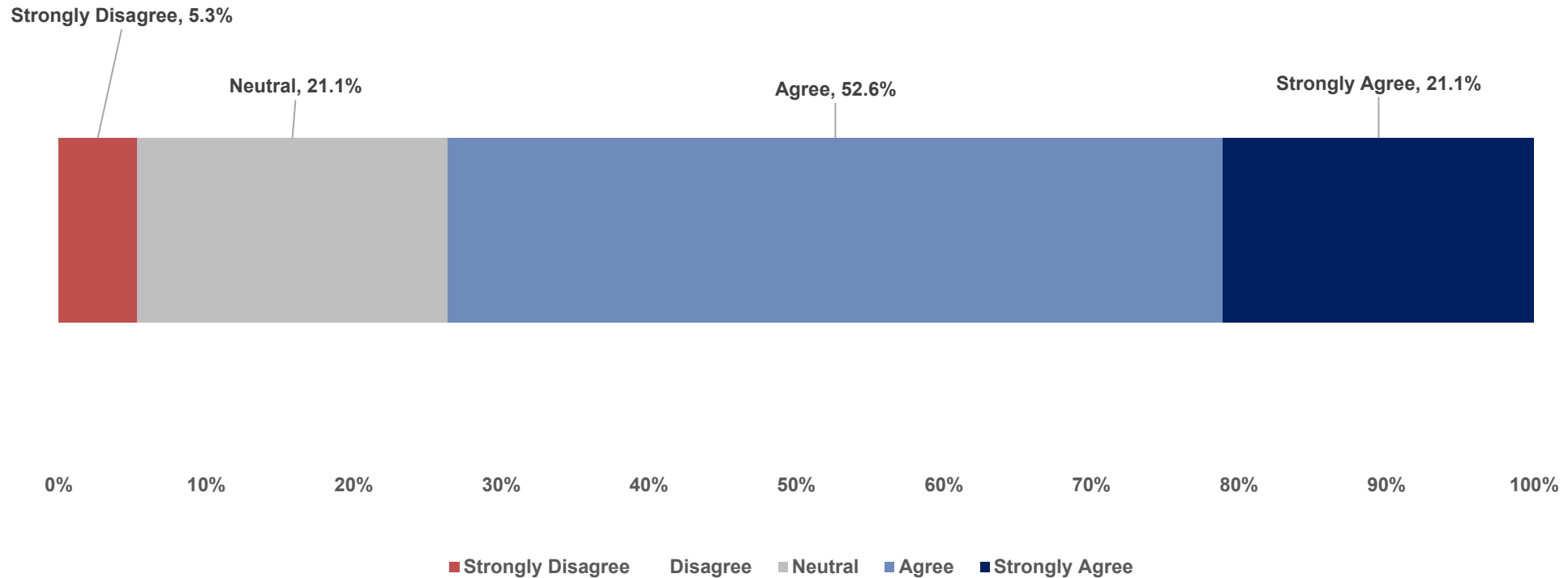
- **Survey open 06/17/2024 – 07/20/2024**
- **19 responses**
- **3 key questions:**
 - To what extent do you agree/disagree about a statement regarding the Algiers Ferry Terminal design?
 - What do you see that you like in the schematic design?
 - What is currently missing from the schematic design that you would like to see?



Ferry Terminal Online Survey – Input

Please rank your choice on the following statement about the schematic design for the Algiers Ferry Terminal Renovation:

The renovations shown in the schematic design would improve my experience at the Algiers Ferry Terminal





Ferry Terminal Online Survey – Input

What do you see that you like in the schematic designs?

A terminal that can be used by the community

Better access, more amenities

Bike racks, improved pedestrian and bus flow; covered walkway; Café

Concessionaires, vendor, music space

Aesthetic and architectural improvements are pretty good

Covered walkway/queuing area for pedestrians

Better passenger bicyclist motorized vehicle interaction. Café passenger sitting area with wrap around porch.

That's it's a cooler place to wait for the ferry as opposed to waiting on that very hot, and unprotected ramp.

Covered waiting area

The comfort of the waiting area

Access to terminal and balcony

Multi-usage

Covered walk and higher degree of integration into the surrounding neighborhood in terms of design and use

Covered walkway, covered bike parking, indoor air conditioning

Love the wraparound porch. Appreciate the awning over the access ramp

ADA access overall renovations

Ferry dock improvements

It's new and looks like an open concept



Ferry Terminal Online Survey – Input

What is currently missing from the schematic designs that you would like to see?

Roof designs that match existing structure; Workable vehicle drop-off (vehicles will continue to block entrance at Morgan St); More gardens/trees

Beautification of landscape. A viewing, photo spot on the outside facing the river.

Covered walkways from the bus stop to the terminal would be great.

Terminal building is off the route pedestrians will take to and from boats. This means little foot traffic for any shops, etc., in terminal building.

Potentially more landscaping and/or multi-use space rather than being only a ferry terminal (within reason).

Cafe/coffee shop

Cafe/coffee shop

Bike racks for those of us who may bike to the terminal

Background music

Food and Beverages

Vending Machines

Covered parking for cars, more amenities (playgrounds, restaurants, coffee shops, ferry gift shop)

Bathrooms, plan for high traffic, guarantee that ramp from parking area to Levee Trail at Louis Armstrong is open for public use

Vehicle access on ferry



Next Steps

The RTA and its design team are incorporating your comments and feedback into their next set of design drawings.

The RTA will continue to provide updates to the public and post materials to the Algiers Ferry Terminal project website.

Additional questions can be directed to comments@norta.com